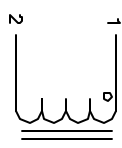
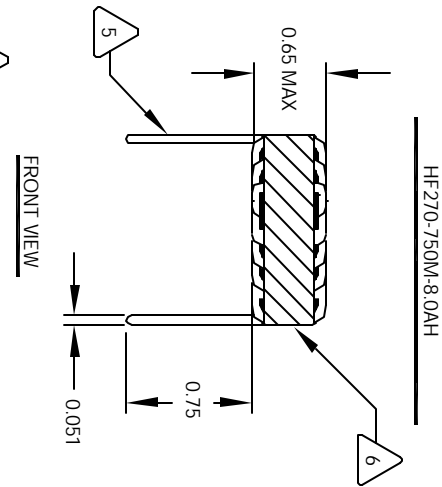


The information contained in this drawing is the sole property of CWS Coil Winding Specialist. Any reproduction in part or whole without written permission of CWS Coil Winding Specialist is prohibited.

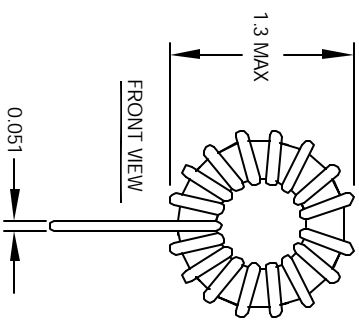
REVISION HISTORY			
REV	ECN	DESCRIPTION	DATE
A		PRODUCTION RELEASE	2/9/04



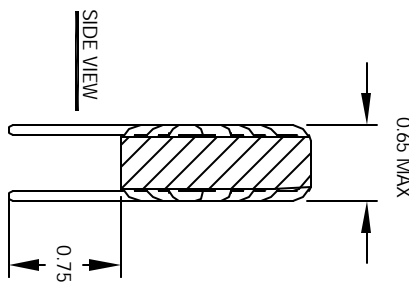
SCHEMATIC



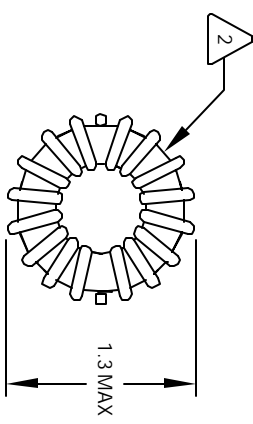
FRONT VIEW



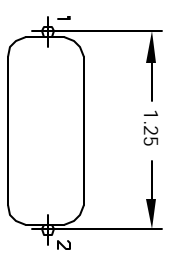
FRONT VIEW



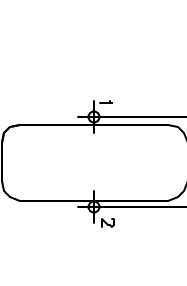
SIDE VIEW



BOTTOM VIEW



MOUNTING HOLES PATTERN



MOUNTING HOLES PATTERN

- TO THE CORE
MUST REST FLAT ON PCB. LEADS MUST BE TANGENT FLUSH WITH THE COIL EDGE. AS SHOWN (I.E. COIL REMOVE INSULATION AND TIN LEADS 0.75 INCH
- WIND COILS EVENLY SPACED AROUND THE CORE
- CONSTRUCTION:
HI-POT TEST FOR WINDING TO CORE ISOLATION = 500VDC MIN
CURRENT RATING : 8.0 AMPS, 40 °C TEMP. RISE, NO AIR FLOW
DCR = 23.0 MILLI-OHMS MAX.
DC BIASED = 8.0 AMPS, INDUCTANCE = 66 UH
DC BIASED = 12.0 AMPS, INDUCTANCE = 60 UH
INDUCTANCE = 75 UH +-10% @ LOW DC BIAS, 1 KHZ, 250mV
- SPECIFICATIONS:

- WIRE: UL RECOGNIZED 200°C RATED MAGNET WIRE
CWS BYTE-MARK OR OTHER APPROVED PART
CORE: COATED HIGH FLUX TOROIDAL CORE
- RATING CLASS B (130°C MIN.) REQUIRED
MATERIAL: UL RECOGNIZED 94V-0 FOR FLAMMABILITY

NOTES: TOROIDAL POWER CHOKE. ALL DIMENSIONS IN INCHES

CODE IDENT	MFG. P/N	DESCRIPTION	ITEM NO.
PARTS LIST			
AUTOCAD SOLIDWORKS SIGN	X	CWS Coil Winding Specialist www.cwcoilwinding.com	
DATE	DATE	DATE	DATE
2/8/04	2/9/04	2/9/04	2/9/04
TKK	JLJU	DKR	DKR
3/8/04	3/8/04	3/8/04	3/8/04
JLJU	JLJU	JLJU	JLJU
3/8/04	3/8/04	3/8/04	3/8/04
TITLE: Toroidal Power Chokes			
SIZE: B			
SCALE: 2=1			
HF270-750M-8.0A			
REV B			
SHEET 1 OF 1			